



**Hampshire &
Isle of Wight**
Wildlife Trust

Help us discover local wildlife

**Take part in our Citizen Science Survey and support nature across
Hampshire & the Isle of Wight**

Getting Started

This guide will help you take part in the Trust's citizen science project by showing you how to safely and responsibly record wildlife sightings. Whether you're a nature enthusiast, school, family, or business, it provides all the tools you need to get involved and connect with nature.

You don't need to complete the survey digitally while you're outdoors. The guide includes Printable Wildlife Spotter Sheets so you can record your sightings on paper - perfect for gardens, parks, school grounds, or nature walks across Hampshire and the Isle of Wight.

Just remember to upload your records later from a phone, tablet, or computer. Your sightings are important and help us build a clearer picture of local wildlife.

Date: _____

Time: _____

Weather Conditions: _____

Location (Postcode/What3Words or GPS):

Habitat Type (e.g. garden, woodland):



Sharing your sightings safely and responsibly

Health & Safety Guidance

- Be tick aware: Stick to paths, avoid long grass where possible. Check for ticks after visits and remove promptly if found.
- Plant safety: Avoid touching unknown plants; wash hands after outdoor activities.
- Sun protection: Wear sunscreen, a hat, and bring water, especially on sunny days.
- Footwear: Wear sturdy, waterproof footwear suitable for the terrain.
- Supervision: Children should be supervised during all outdoor activities.

Submitting Photos

- Wildlife welfare first: Do not disturb animals or their habitats to get a photo.
- Accuracy matters: Only record species you're confident in identifying. Use spotter sheets or apps like Seek/iNaturalist to help.
- Privacy: Avoid including people's faces or private property in photos.
- Upload tips: Choose clear, close-up photos where possible. Include context if helpful (e.g. whole plant).
- By submitting your photos, you give Hampshire & Isle of Wight Wildlife Trust permission to use them in our work, including in publications, online, and educational materials. We'll credit you where possible.

Submitting survey data

Step 1: Click the link or QR code provided by the Trust to access the Team Wilder citizen science survey.

Step 2: Head outdoors and begin your survey!

Step 3: Fill in your location, species observations, and upload photos if possible.

Step 4: Submit once complete.

Step 5: Repeat as often as you wish. Data from different seasons and years from the same location is very useful.

Submit your results to:
hiwwt.org.uk/citizen-science
or scan the QR below.



Outdoor Learning Ideas for Schools & Families

Mini Bioblitz

Spend 30 minutes counting as many species as you can

Choose a spot, your garden, local park, school grounds, or a wild space, and set a timer for 30 minutes.

Look high and low for wildlife: insects, birds, plants, fungi, and anything else you can find.

Use a spotter sheet or wildlife app to help identify species. It's a great way to notice just how much life is around you in a short space of time!



Submit your results to:

hiwwt.org.uk/citizen-science or scan the QR code. We would love to see your wildlife photos or hear your sound recordings. Please upload these when submitting your records.

Habitat Hunt

Compare two areas and record differences

Pick two different habitats, such as a hedgerow and a lawn, a flowerbed and a path edge, or a shady area and a sunny one. Spend equal time in each space and record what species you find.

Are there more insects in one area?
Do certain plants prefer shade?

This activity helps build an understanding of how different conditions support different kinds of life.

Sound Safari

Close eyes and record the sounds of nature

Find a quiet spot outdoors, sit or stand still, and close your eyes for a few minutes. Listen carefully, can you hear birdsong, buzzing bees, rustling leaves, or distant water? Write down or draw what you hear. This mindful activity is a great way to connect with your surroundings and notice wildlife you might not see.

Did you know?

Recording common species, like daisies or blackbirds, is just as important as noting rare ones. These records help scientists track changes in biodiversity over time.

Nature Connection & Wellbeing for Businesses and Organisations

Building nature connection into your workplace can boost staff wellbeing, creativity, and morale, while also encouraging a greater appreciation for the natural world around us.

Whether you're a small team or a large organisation, these simple ideas can help bring a little more wild into the working day. From lunchtime walks to nature-themed challenges, small changes can make a big difference.

- **Wild Wellness Walks:** Organise short staff walks to spot wildlife.
- **Lunch Outdoors:** Encourage eating outside where possible.
- **Nature Noticeboards:** Share daily or weekly sightings on a communal board.
- **Green Meetings:** Hold walking meetings or ones in outdoor spaces.
- **Wild Goals:** Set collective challenges like "spot 10 pollinators this week."

From creating wildlife-friendly spaces at your workplace to improving staff wellbeing through nature connection, there are plenty of ways your business can support local wildlife.

Become a Corporate Member or partner with us to make a difference.

For more information contact:

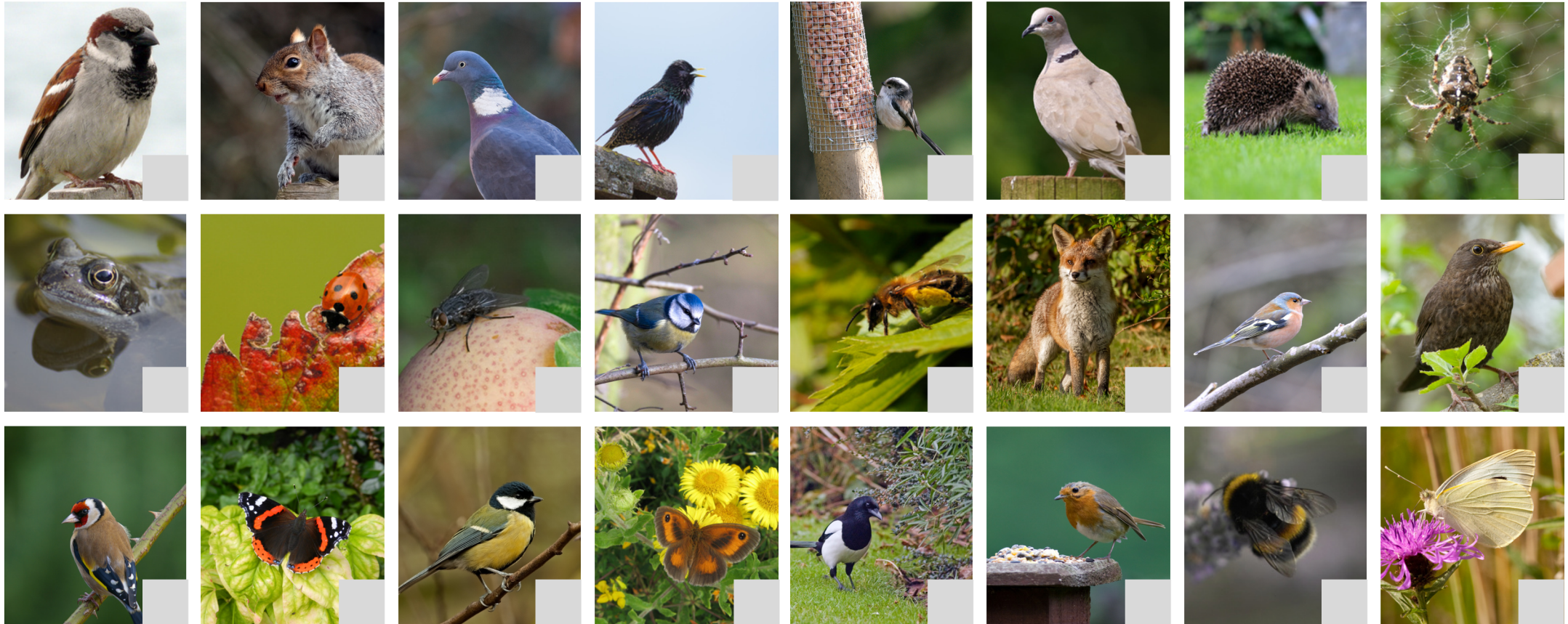
corporates@hiwwt.org.uk

Window Wildlife Survey

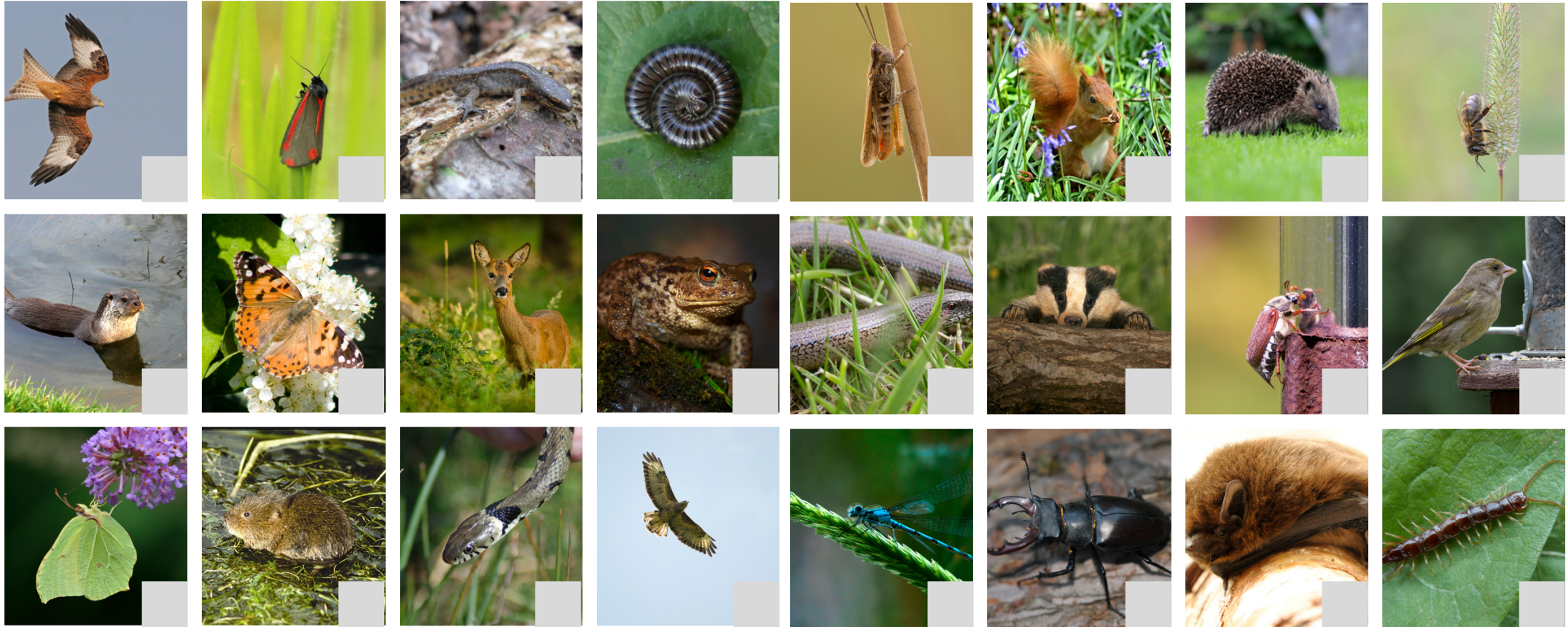
We're inviting you to step outside and spot the nature on your doorstep, from birds in your garden to butterflies in the park. By recording what you see, you'll help us map where wildlife is thriving.

What's the weather like?

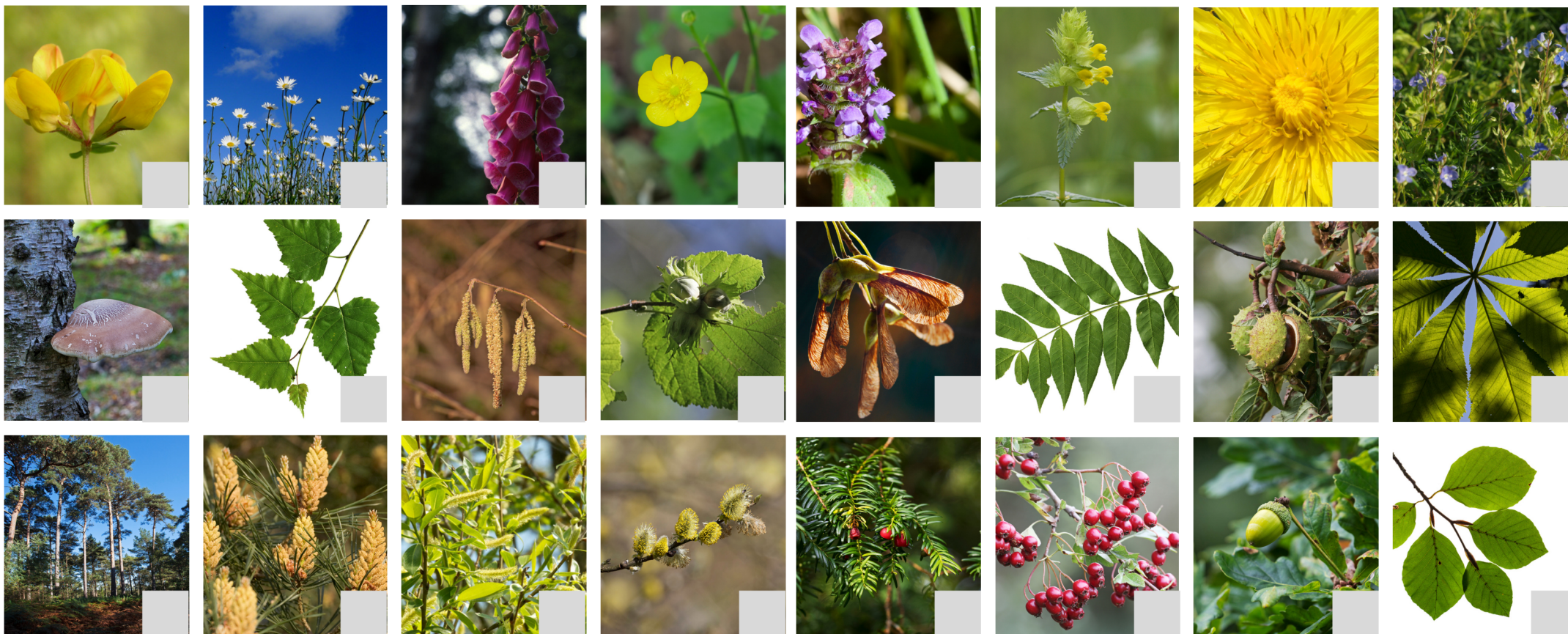
Where are you doing this survey?



House sparrow © Charles J Sharp | Grey squirrel © Terry Whittaker/2020VISION | Wood pigeon © David Kilbey | Starling © Ed Marshall | Long-tailed tit © Darin Smith | Collared dove © Gillian Day | Hedgehog © Tom Marshall | Garden spider © Richard Burkmar | Frog © Brian Shorter | 7-spot ladybird © Dawn Monrose | House fly © Jon Dunkelman | Blue tit © Darin Smith | Tawny mining bee © Nick Upton/2020VISION | Fox © Andy Ames | Chaffinch © Ian Cameron-Reid | Blackbird © Dave Kilbey | Goldfinch © Neil Aldridge | Red admiral butterfly © Hillary Bagshaw | Great tit © Ian Cameron-Reid | Gatekeeper butterfly © Elliott Fairs | Magpie © John Windust | Robin © David Kilbey | White-tailed bumblebee © Derek Moore | Large white butterfly © Chris Bean



Red Kite © Linda Priestley | Cinnabar moth © Kate Garnham | Palmate newt © Sarah Bignell | Millipede © Gemma Paul | Field Grasshopper © Chris Button | Red squirrel © Zoe Cox | Hedgehog © Tom Marshall | Honeybee © Mike Blacknell | Otter © Chris Bean | Painted Lady butterfly © John Windust | Roe deer © Andrew Whitmarsh | Common toad © Alan Price | Slow worm © Bruce Shortland | Badger © Darin Smith | Cockchafer © Linda Carlin | Greenfinch © David Kilbey | Brimstone butterfly © Gary Prescott | Water vole © Graham Roberts | Grass snake © Natalie Rogers | Buzzard © David Foker | Common blue damselfly © Alan Price | Stag beetle © Jonathan Oakley | Pipistrelle bat © Amy Lewis | Centipede © Gemma Paul



Birdsfoot trefoil © Philip Precey | Ox eye daisy © Bob Chapman | Foxglove © David Foker | Buttercup © Kate Garnham | Selfheal © David Kilbey | Yellow Rattle © Mike Read | Dandelion © Mike Read | Germander speedwell © Keith Aburrow | Birch polypore © Mike Read | Silver birch © Mike Read | Hazel © Mike Read | Hazel catkins © Mike Read | Sycamore seeds © Alan Price | Ash © Mike Read | Horse chestnut © Mike Read | Horse chestnut © Mike Read | Scots pine © Mike Read | Scots pine © Mike Read | Crack willow © Steve Page | Goat willow © Mike Read | Yew © Mike Read | Hawthorn © Mike Read | Pendunculate oak © Mike Read | Beech © Mike Read

Submit your results to: hiwwt.org.uk/citizen-science or scan the QR code. We would love to see your wildlife photos or hear your sound recordings. Please upload these when submitting your records.

Registered Charity Number 201081





**Hampshire &
Isle of Wight**
Wildlife Trust

Thank You

Hampshire & Isle of Wight Wildlife Trust
Beechcroft House, Vicarage Lane
Curdrige, Hampshire SO32 2DP

01489 774400
hiwwt.org.uk

Registered Charity Number 201081