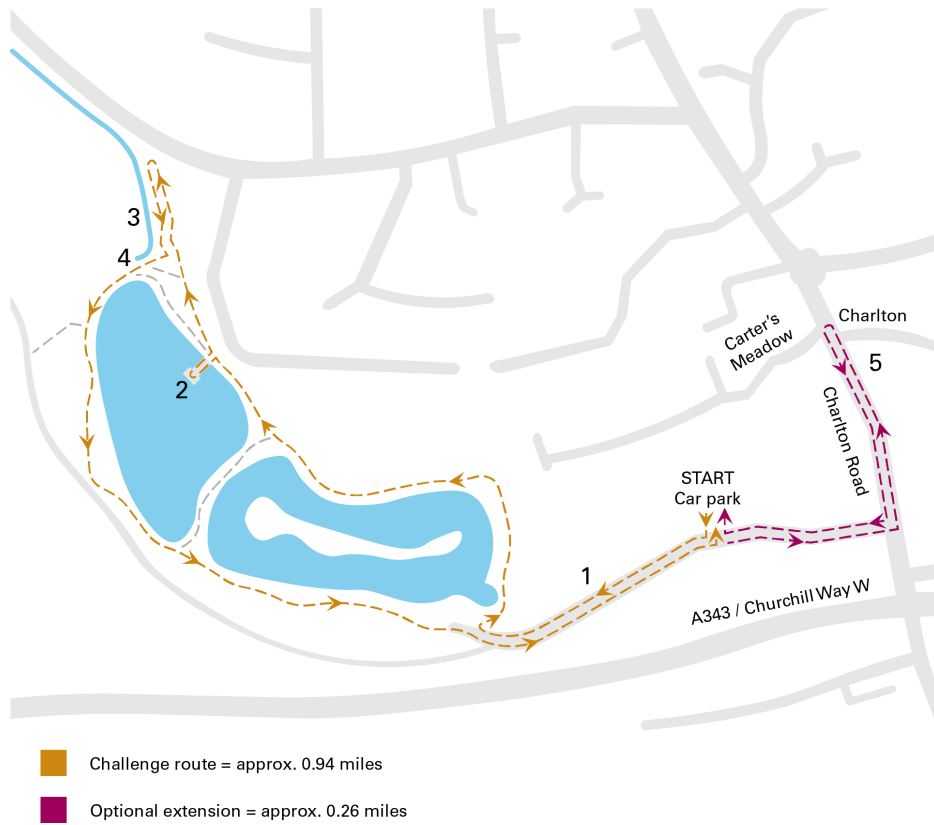


Route Map

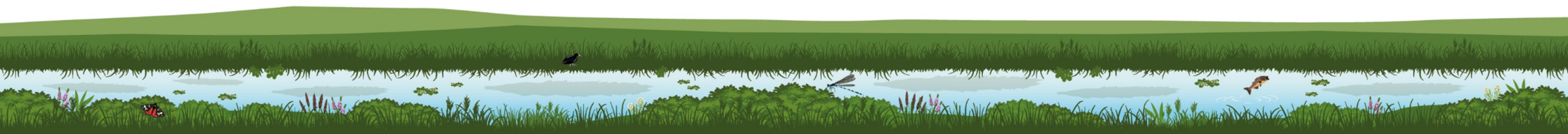


Chalk Stream Challenge



Watercress and Winterbournes is a Landscape Partnership Scheme that is protecting, enhancing and celebrating the seven chalk streams that make up the headwaters of the Rivers Test and Itchen: the Bourne Rivulet, Candover Brook, Cheriton Stream, Pillhill Brook, River Arle, Upper Anton and Upper Test. The scheme is supported by the National Lottery Heritage Fund and brings together 16 partner organisations. To learn more visit www.hiwwt.org.uk/winterbournes

**Challenge Route:
The Upper Anton
at Charlton Lakes, Andover**



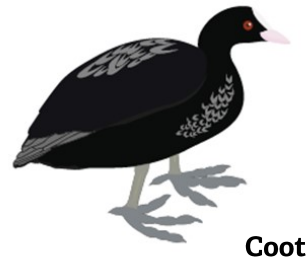
Route Guide

Park at Charlton Lakeside car park opposite the leisure centre. Walk towards the leisure centre and take the tarmac road to the right. There is a smaller car park at the end of this road, please be aware of vehicles approaching from both directions.

The old watercress beds are on your right (1) but they are now very overgrown with nettles and other native plants.

When you reach the smaller car park, bear right down to the lake then follow the path round to the right and over the bridge.

Keep on this footpath as it follows the edge of the lake until you reach a fork. Keep right. At the next path junction take a look off the viewing platform to your left (2). What wildlife can you spot on the lake?



Coot

Re-join the main tarmac path and stay on this, keeping the houses on your right and bearing right at the next path junction. You will begin to head out of the park towards the Charlton to Penton road. Whilst walking along the path look at the clarity of the water in the stream down to your left (3). Look at the riverbed, for foliage including watercress, and for wildlife.

At the railings just before the road turn around and re-trace your steps, bearing right so you re-join the path around the top of the lake. The stream will now be on your right.

You will find a dog dip where you could access the stream to dip for invertebrates and small fish, have a paddle, measure the flow of the river or play pooh sticks (4).

Cross over the bridge and head round the lake to the playpark, café and boating kiosk and stop for a while if you wish, before walking on round to the smaller car park to complete your circuit of the lake. Head back along the tarmac road to the car park by the leisure centre.

You should be able to cover these parts of the challenge on this walk:

Section 2: 2, 3

Section 3: 7, 8, 9, 10, 11

Section 4: 12, 13

Section 5: 16, 18, 19



Kingfisher

Route extension: Charlton Cottages

Leave the car park in the opposite direction to Charlton Lakes and walk to the road. Cross over the road, turn left and walk towards the little road on the right called Charlton, which boasts a pretty row of cottages. You will walk past Tesco Express (now on the opposite side of the road).

Just before you get to the cottages, you will see an old bridge (5). Follow the road in front of the cottages, the river will be down to your right. This location is picturesque when the stream is flowing but it can be dry, depending on the rainfall and therefore the water table.

Head back to the little bridge and cross over the main road towards Carters Meadow. Turn left and walk back to the car park, once again passing Tesco Express.



Interesting addition: The source of the Upper Anton

The Upper Anton (winterbourne) river begins beyond the Pentons and flows through Penton Mewsey village pond where another spring may be seen bubbling up through the road surface of the old ford before it crosses into Penton Park. Here the water is extracted for business use.

Individual group members may want to visit this location in their own time with a responsible adult - group parking is not available.

From the village pond (by the junction of Penton Lane and Chalkcroft Lane), the river follows the route of Foxcotte Lane then Foxcotte Road back towards the spot in Charlton Lakes where you turned around at the railings. There are various pull-ins along Foxcotte Lane where you could carefully park to take a look at the river and look for the remains of bridges and sluices.

Location of village pond at Penton Mewsey: SP11 0RA or W3W /// basher.inclines.pranced

Interesting addition: Anton Lakes

You can follow the Anton Way from Charlton Lakes to Anton Lakes, by following the footpath that runs alongside Hillside Gardens. This path takes you alongside old watercress beds which are a continuation of the ones you saw earlier.

You could arrange to be collected from Anton Lakes car park after walking the Charlton route, or you could meet and park at Anton Lakes instead and use the circular walk here to complete some of the activities.

At Anton Lakes you should be able to cover these parts of the challenge:

Section 2: 2, 3

Section 3: 8, 9, 10, 11

Section 4: 12

Section 5: 16, 18, 19

Additional information (please check opening times and costs)

- Charlton Lakeside car park SP10 3TR (signposted, please note the post code directs you to Parkview Close, not the car park) or W3W ///diverting.query.send
- Two lakes on the route with marked paths between
- Paths are tarmac
- Playground, café with toilets and crazy golf at Charlton Lakes
- Car park at Anton Lakes (SP10 3SY) or W3W /// alleyway.salmon.discloses
- OS Explorer map 131 covers this area

Useful websites

[Charlton Lakeside](#) (landowner)

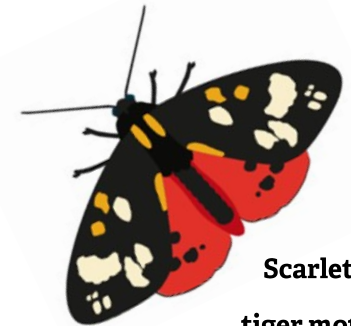
[Anton Lakes Local Nature Reserve](#)

[Test Valley Borough Council](#)

[River Anton Way](#)

[Andover Heritage Trail](#)

[The Test Way](#)



**Scarlet
tiger moth**

