

JOB INFORMATION PACK

Arcadian Senior Consultancy Manager and lead on Nature Based Solutions

CREATING A



HAMPSHIRE AND ISLE OF WIGHT

Welcome



Debbie Tann

Debbie Tann
Chief Executive

I'm delighted that you are interested in working at Hampshire & Isle of Wight Wildlife Trust! This information pack contains all you need to know about the job on offer, and it will give you a flavour of our amazing charity and the vital work we do for wildlife and people across our two counties.

Here in Hampshire we have globally important wetlands around the coastline of the Solent and exceptionally rich medieval landscapes in the New Forest. Our thriving cities and suburbs are surrounded by exceptional places for wildlife including gin-clear chalk rivers, flower-rich meadows and downlands, extensive heathlands and ancient woodlands. And our jewel in the crown is the Isle of Wight where you can walk all day across downland turf and along spectacular cliffs. That's our working environment and you could share it with us!

We offer an extraordinary place to work – our team are a passionate, friendly and dedicated bunch of real advocates for the natural world. We truly love what we do and we're an ambitious lot as well. Our exciting vision for the future drives us all forward, creating a buzzing energetic vibe in the office and beyond.

As you read through this pack, and perhaps explore our website too, I hope you will be inspired by all that the Trust has to offer and will be excited by the opportunity to show us what you can bring to our team. We look forward to meeting you!



About the Trust





About us

- Hampshire & Isle of Wight Wildlife Trust was formed in 1960 by a small but dedicated group of volunteers concerned about the threats to wildlife in the local area. Over 60 years we have grown to become one of the largest and most successful nature conservation charities in the region. We're part of The Wildlife Trusts, a federation of 46 independent charities working together towards a shared vision of a Wilder Future.
- Today we employ 100 staff and our work is supported by more than 26,000 members and 1,200 volunteers. Our turnover is around £6 million each year.
- We look after more than 55 nature reserves covering over 4,600 hectares of land and we have two farms that support our 230 cattle and 250 sheep. We run three education centres which connect over 10,000 children with nature every year and we engage thousands of others to help them discover the wonders of nature on land and at sea. Each year, our nature reserves are visited by over 400,000 people and a further 40,000 people take part in a wide range of different activities with us.
- As well as delivering conservation management and wildlife projects ourselves, we work with a host of other organisations, agencies, farmers and landowners, schools, businesses, and communities to protect wildlife, restore ecosystems, and create more space for nature to thrive.
- Our fully integrated consultancy – Arcadian Ecology & Consulting – provides services, advice and expertise in ecology and planning, as well as a growing portfolio around the delivery of nature-based solutions (NBS).
- And we use our expertise and experience to influence policy and legislation, and campaign for a better future for wildlife on land and at sea. We do this locally and also nationally as part of the UK partnership of Wildlife Trusts and with the wider environmental sector.
- At the end of 2019 we launched a new, exciting and ambitious strategy – Wilder 2030 – which sets out our plans for the next decade as we respond to the climate and ecological crises. Our work has never been more important.



Hampshire's wonderful wildlife



- Hampshire is one of the most biodiverse counties in England. From the coastal marshes of the Solent, to globally rare chalk streams, heathlands, ancient woodlands, chalk downlands and the New Forest – this is a special place.
- We look after 46 nature reserves across Hampshire including: Roydon Woods, a 1000-acre ancient woodland in the heart of the New Forest; Pamber Forest, a rich biodiversity hotspot in rural Basingstoke; Farlington Marshes on the Solent coast, supporting tens of thousands of wetland birds; Winnall Moors on the River Itchen, rich in chalk stream rarities like southern damselfly, otter, water vole and brown trout; and Fishlake Meadows, a naturally rewilded former arable farm and now a wetland wonderland supporting osprey and bittern.
- Our three education centres welcome children and young people throughout the year and offer opportunities to connect with nature and learn more about local wildlife. Beyond our reserves, we work with schools, groups and businesses to create wilder communities in towns and cities, including our Wilder Portsmouth project in partnership with Southern Co-op.
- We also work on a whole variety of projects to improve wildlife on other people's land – including a major partnership project Watercress & Winterbournes, the New Forest Non-Native Plants Project and the Wallop Brook Farmer Cluster Project.
- Although our work has protected many incredible wildlife gems and significantly improved other areas, these still represent a small percentage of the county. Economic development, intensive land use, pollution and climate change are all threatening our precious natural environment.

For a wilder Hampshire & Isle of Wight



The Island's wildlife riches

Hampshire & Isle of Wight
Wildlife Trust 

- The Isle of Wight is an incredible place for wildlife. At only 23 miles wide, the Island is a microcosm of south-east England with all the habitats characteristic of the region found here. In fact, it is unusually rich in species and habitats compared to similar areas on the mainland.
- The chalk grasslands, maritime cliffs and slopes, and the estuaries are important on a national and international scale. Being an Island, its relative isolation means there are fewer introduced species such as grey squirrels, deer or mink here and there are stable populations of native animals which have become rare on the mainland, such as red squirrels, dormice, bats and water voles. The mild climate and maritime situation provide a foothold for species such as the Glanville fritillary butterfly, on the northern edge of its European range.
- The Trust has added a number of new sites to our complex of nature reserves on the Island in recent years, and the east Wight area from the chalk ridge to the Yar valley is now central to our plans for rewilding and reintroducing missing species such as the cirl bunting, chough, and beaver. The potential to develop a nature-based economy here is truly exciting.
- Whilst the Island is undoubtedly richer in wildlife than many parts of the mainland, it is not immune to losses. Nature is still declining here, and the majority land use is intensive agriculture. Space where wildlife thrives is far too small and too isolated to be sustainable and resilient, especially in the face of climate change and a growing human population.

For a wilder Hampshire & Isle of Wight



Marine wildlife wonders

- Did you know that dolphins, cuttlefish and seahorses can all be found in the seas off the Hampshire and Isle of Wight coast?
- The Solent is one of the busiest seaways in the world, yet still supports marine habitats and species of national and international importance. Our rich and productive shores and mudflats support thousands of migratory and breeding birds and our seagrass beds provide food, shelter and nursery grounds for commercially important sea bass and spider crabs.
- We work and campaign for wilder seas. We use the valuable data that we collect to help advocate for better protection and management of our seas. We also inspire local people to understand and help to care for our wonderful marine wildlife and habitats.
- Our Lottery funded project, Secrets of the Solent, spans the Hampshire coastline and crosses the water to the Island. We inspire communities, fishermen, recreational boaters and others to appreciate and care for our wonderful marine environment. We communicate with those who work, travel or simply enjoy being on our seas, to promote sustainable fisheries and responsible activities, particularly inside our important Marine Protected Areas.
- But our seas remain under tremendous pressure from over-exploitation, disturbance and pollution. Organic waste and excess nitrates from fertilisers overwhelm natural systems and drive down biodiversity. And, as with life on land, our local seas are at critical threat from the effects of climate change, global warming and sea level rise.

For a wilder Hampshire & Isle of Wight

Our strategy



Our ten year vision and strategy Wilder 2030 was launched in October 2019. The plan is our response to the nature emergency – recognising that the twin threats of climate breakdown and ecological collapse are the most important issues of our time. Our strategy recognises that the Trust has a vital role to play in making a substantial local contribution to tackling this global challenge.

Our work over the past 60 years has protected some of the most important places for nature. But now our work must step up a gear. As well as protecting the fragments of wildlife rich habitat that we have left, we need to start restoring ecosystems as scale. Wilder 2030 sets out our ambitious strategy to put nature into recovery.

This decade is critical and 2020 will be a significant turning point. We must get many more people on nature's side and create much more space for wildlife to thrive. The science suggests that we need 1 in 4 people to take action for nature, and that we need at least 30% of our land and sea to be made much wilder. The pressures on nature must also be reduced everywhere else so that the wider environment is less hostile for wildlife and resources are used more sustainably.

We know that investing in nature-based solutions makes economic sense and that nature's recovery can help tackle the climate crisis. We know that missing species must be returned to heal broken ecosystems. We know that nature's recovery is essential for people's health and wellbeing and for a better society. As the leading local champion for wildlife in our two counties, the Trust can deliver all this and more, either directly or through partnerships or by inspiring action in others.

Our strategy positions the Trust as both a campaigner for, and deliver of our mission. Through our two flagship programmes – Team Wilder and Wilder Land and Sea – we will restore and rewild the landscape and build a movement for change to tip the balance in favour of nature.

Wilder
FUTURE



Our Vision is for a wilder Hampshire and Isle of Wight ...

where nature is recovering, wildlife is returning, damaged ecosystems are being restored, and everyone benefits from a healthier, more resilient, natural environment

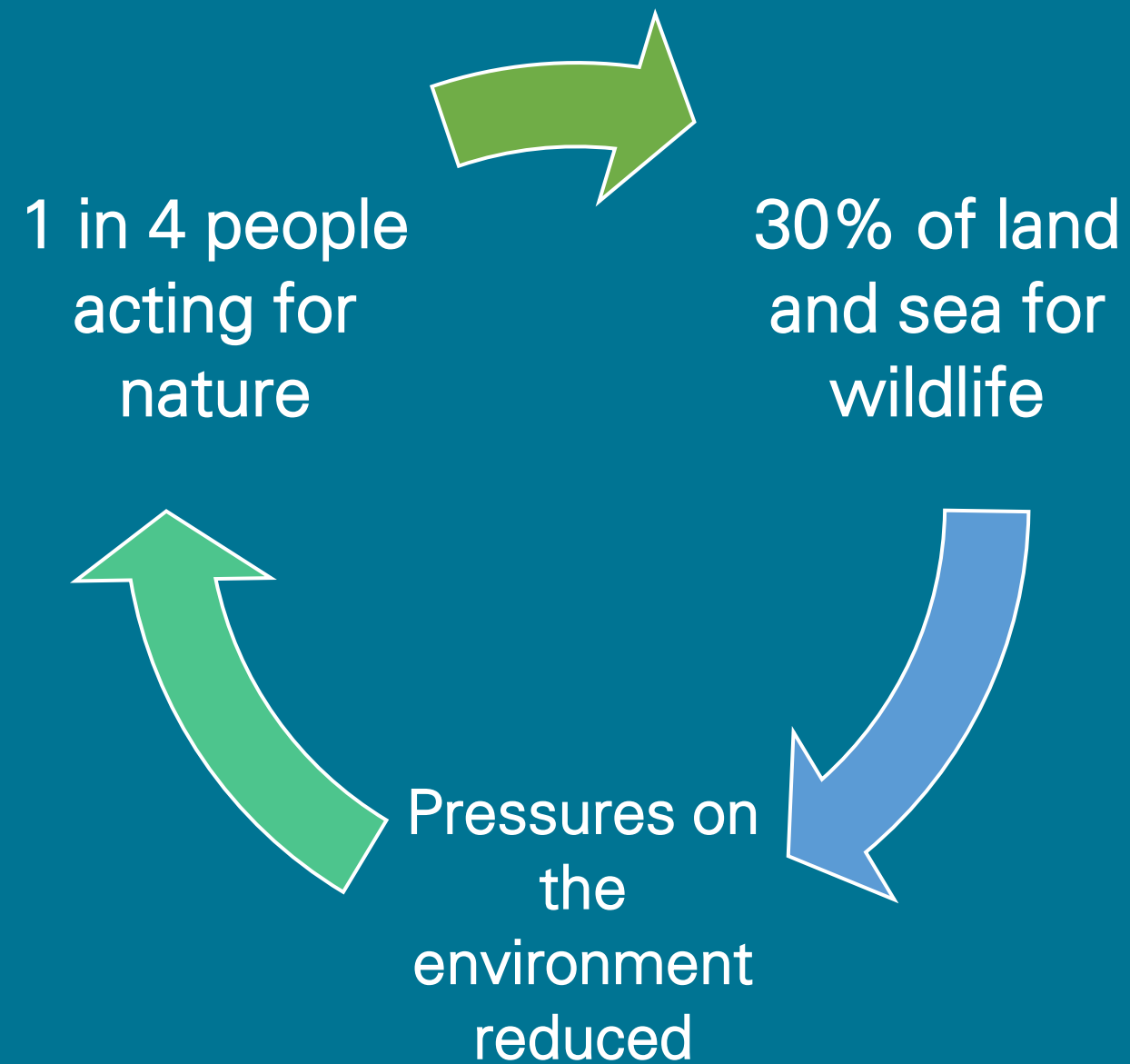


“Our Mission is to get more people on nature’s side and create more space for wildlife to thrive”

Two flagship delivery programmes:



Three overarching and inter-connected objectives:





Team Wilder

Hampshire & Isle of Wight
Wildlife Trust



- Our Team Wilder programme is all about getting more people on nature's side.
- Education and engagement is core to our charitable purpose, and we have provided high quality opportunities for children and adults to learn about nature for many decades. In our strategy, we set out how our engagement work needs to broaden as we step up in response to the nature crisis. We know that there has been a huge surge in interest in the natural world, and concern about the climate emergency and ecological crisis is growing.
- To succeed in our mission we need many people on nature's side – both supporting the Trust and taking action themselves. We are doing more to connect people with nature and encourage 1 in 4 people to take action for wildlife as well as changing their behaviours to reduce their pressure on the environment.
- Alongside embedding the five pathways to nature connection into our educational experiences and visitor engagement on reserves, we're also building programmes which draw on principles from the psychology of behaviour change, community empowerment, and movement building. Our strategic aim is to build a movement of Wilder champions and support Wilder communities across every part of our two counties through Team Wilder.
- There's a role in Team Wilder to suit everyone, whether they're members and supporters, children and young people, individuals, farmers, business leaders, politicians, partners, visitors or the wider public.
- We provide opportunities and support for people wanting to step forward, whether to champion Team Wilder or to lead, create or campaign for change in their own community. We provide toolkits and training, tailored programmes for schools, and engaging campaigns and events to connect people with their local wildlife.
- The programme is underpinned by continuous evaluation and design with our audiences that builds a programme that's right for all – and helps reach our 10 year goal of doubling our membership to build more support for the Trust and for nature.

For a wilder Hampshire & Isle of Wight



Wilder Land & Sea



- Our Wilder Land and Sea programme is all about making more space for wildlife by creating a network for nature – spaces where wildlife can thrive, from our own estate to large rewilding projects to small urban gardens and everything in between. Our strategic goal is to achieve 30% of land and sea for nature’s recovery, and for the pressure on the environment to be reduced everywhere else.
- For decades, the core of our work has been our nature reserves, and these continue to be at the heart of the nature recovery network that we need. Our work in the next decade will focus on protecting, expanding and connecting these sites to create a larger functioning network for nature that helps wildlife to recover from past declines. One of our goals is to double our estate to create new nature reserves.
- The programme encompasses not only our direct delivery for wildlife but our work to engage and support others to create space for wildlife on their land. Working with farmers and landowners, partner organisations and businesses, we provide advice and professional services, as well as delivery of partnership projects.
- Our missing species programme aims to improve ecological functioning, bringing more diversity and abundance to depleted lands. We are excited to be spearheading rewilding projects and the return of the beaver to the Isle of Wight, as well as championing an ambitious rewilding farmland birds programme.
- Nature-based solutions are another key delivery mechanism for our mission, as we recognise that investing in the carbon sequestration potential of marine and terrestrial habitats will have a huge role to play in a greener economy and in achieving nature’s recovery. Reducing pollution is another function that natural solutions can deliver, and we are pioneering new approaches such as nitrate credits and the Building with Nature standard to ensure that new developments deliver benefits for wildlife.
- Alongside delivery, our advocacy programme inspires and challenges others to contribute towards our 30% goal, and we campaign for better legislation and policy to create the drivers and incentives for the change we want to see.

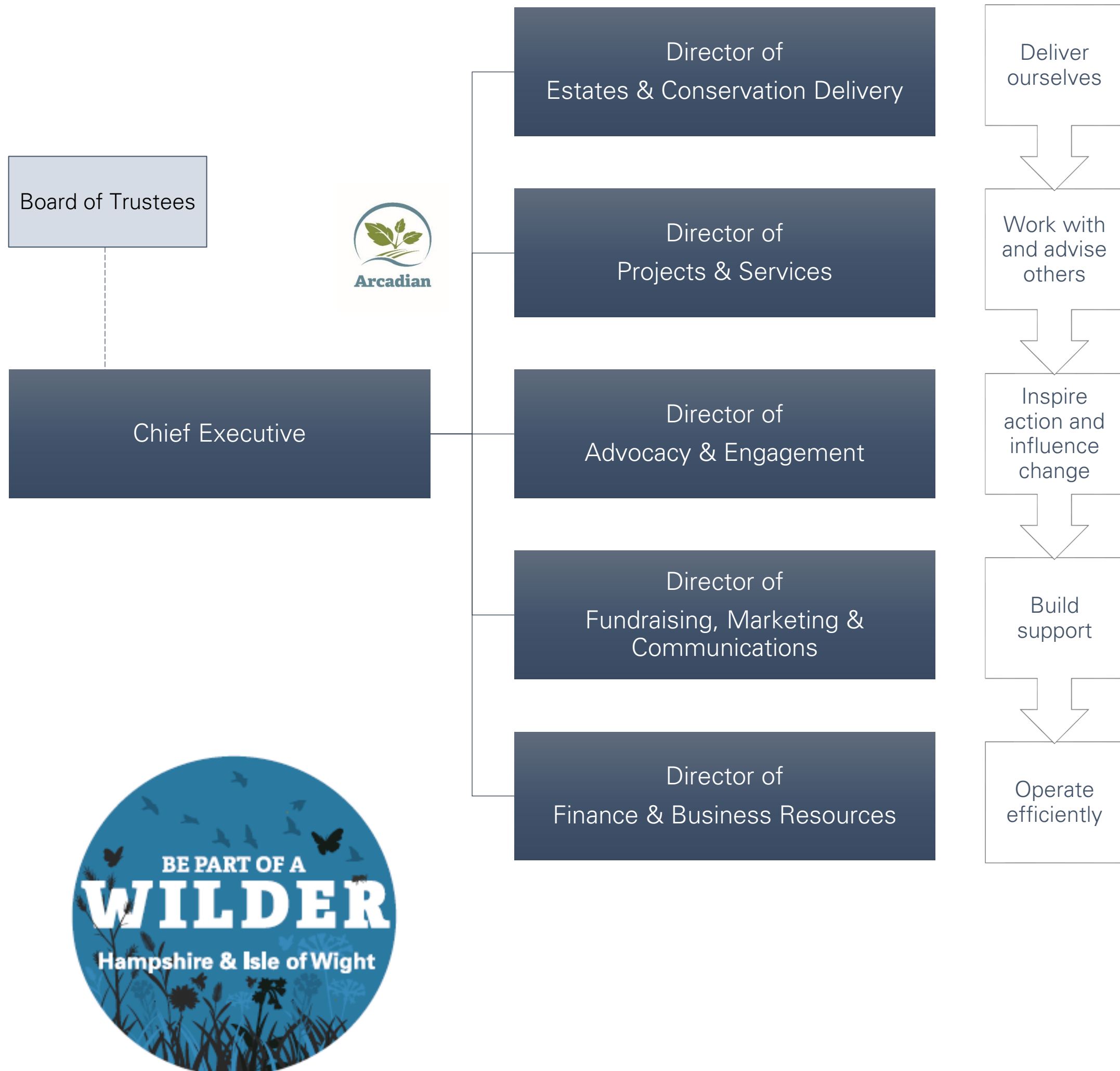
For a wilder Hampshire & Isle of Wight

Organisational structure

Our teams are organised to reflect our strategy, recognising the main ways in which we can deliver our mission:

1. Estates & Conservation Delivery – the team focuses on direct delivery of our mission through our nature reserves and new land acquisitions, carrying out habitat management and wildlife restoration work as well managing the land associated with our education and visitor centres; using our assets to demonstrate what is possible and position the Trust as a key delivery body for nature’s recovery, rewilding and nature-based solutions.
2. Projects & Services – the multidisciplinary team, which includes our consultancy Arcadian, leads on working with others to deliver for nature through partnership projects, farm and land advice, planning services, rewilding and species recovery, nature-based solutions, evidence and monitoring; right across the wider countryside.
3. Advocacy & Engagement – the team leads our Team Wilder programme to inspire action and influence change, this includes our community engagement and learning programmes, advocacy and campaigns, and public affairs, using evidence, expertise and behaviour change science to raise awareness about the issues, push for changes in legislation, policy and practice, and inspire people to take action for nature as part of a growing movement for wildlife recovery.
4. To support all of this activity we need to build support and income. The Fundraising, Marketing & Communications team raises funds, looks after our supporters, communicates and promotes our vision and impact, and works with the delivery teams to build appropriate supporter journeys for everyone taking action for wildlife so they can join our movement and help put nature in recovery by 2030.
5. The Business Resources team provides essential support services to ensure the Trust is a modern, efficient, carbon-positive business with the right human, financial and other resources to deliver.

For a wilder Hampshire & Isle of Wight





Our people



Of course we would not be able to achieve any of our work without our wonderful staff and volunteers. It is the invaluable experience, skills, knowledge and expertise which will make sure our Wilder 2030 ambitions turn into reality.

Our team is a talented bunch with an array of brag-worthy accolades and achievements. For example:

- The hard work and dedication of Alison Cross, our Principal Farm Advisor, resulted in her winning the Arable Farm Advisor of the Year Award in the 2019 Farmer's Weekly Awards.
- Our Ecology team are nationally renowned for their expertise in various species including Dr Ben Rushrook, Senior Ecologist, who is an expert on chalk stream biodiversity, especially the native crayfish and southern damselfly.
- Rachel Remnant, Reserves Officer, is nationally recognised for her expertise in managing floodplain hay meadows and chalk streams and is a national ambassador for these rare and special habitats.
- Dawn Preston, Education Officer, is one of only 14 people in the UK who is endorsed and accredited by the FSA as a Forest School Trainer.
- Martin De Retuerto, Director of Projects & Services and his team won the much-coveted Orvis Conservation Awards for the transformative river restoration work completed at Winnall Moors.
- Our New Forest Non-Native Plants Project, delivered by Catherine Chatters and Jo Gore for the past decade, has been recognised by Government as one of the most successful projects of its type and is a real exemplar both nationally and internationally.
- Our Senior Marine Specialist, Dr Tim Ferrero is a leading expert on marine ecology with more than 65 published papers to his name in peer reviewed scientific journals.

And that's just a few of the brilliant professionals who make the achievement of our mission possible. All in all we have just over 100 staff and 1,200 volunteers who do excellent work for wildlife every single day!

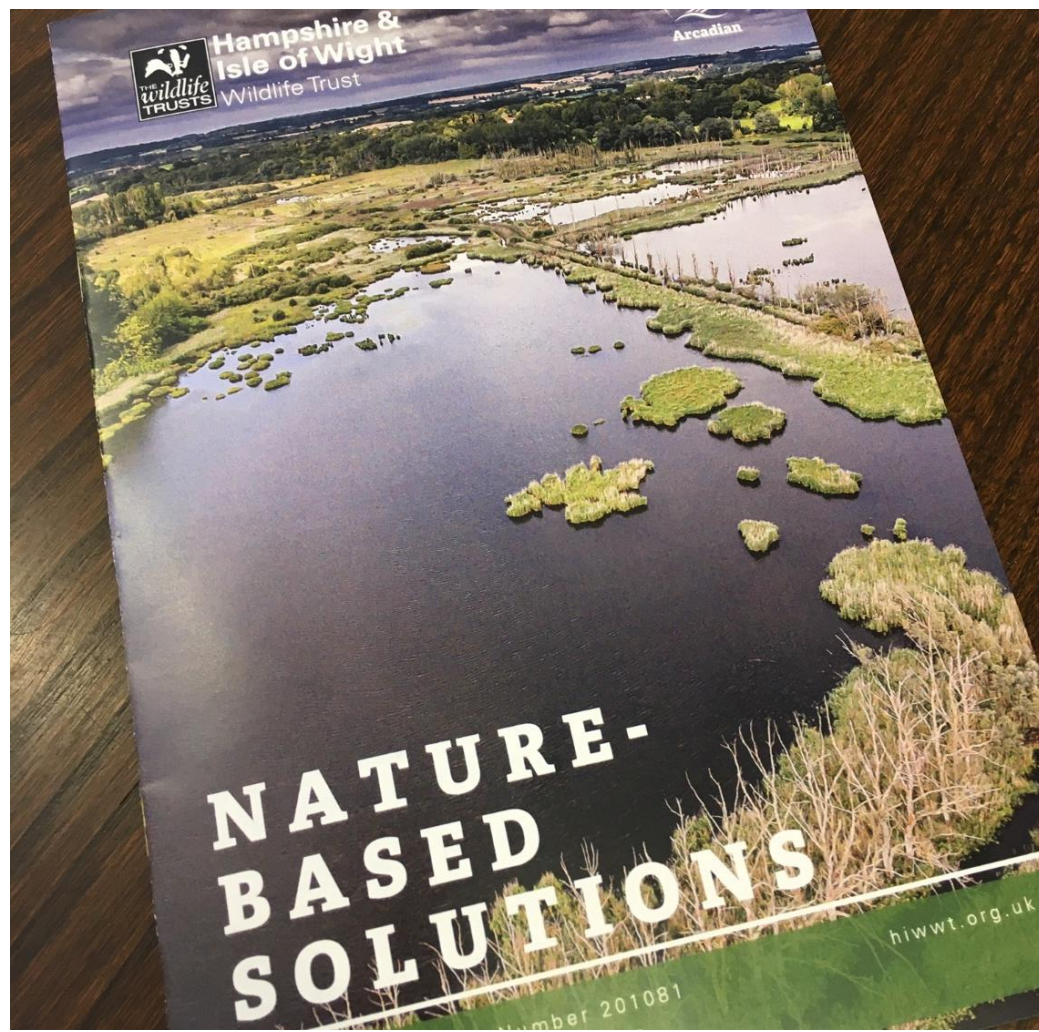
For a wilder Hampshire & Isle of Wight



About the Role

- Job information and what we are looking for
- How to apply





Arcadian Senior Consultancy Manager and lead on Nature Based Solutions



Here in Hampshire and the Isle of Wight we have huge challenges. We have some of the biggest concentrations of important wildlife sites coupled with some of the greatest development pressure. Urban growth and economic ambitions rub up against globally important terrestrial habitats and complex marine ecosystems, accelerating the impacts of the climate and nature emergency. For years, wildlife has lost out to economic growth and development. Despite significant efforts from the Trust and others, commenting on plans and objecting to schemes, many of our concerns have been ignored. But we've recently been trialling a new approach.

Triggered by nutrient pollution issues in the Solent, the urgency of the climate crisis and innovations by other Wildlife Trusts, we have changed our whole involvement with the economic development sector. By engaging early and strategically, and adopting a solutions-focused approach, we have started a transformational journey not only for the Trust, but the needs of nature. In the last year we began delivering nature-based solutions, including a nitrates reduction programme and the Building with Nature standard, and these have unlocked new partnerships and ways of working. We are well placed to build on our success and expand our approach to deliver tangible benefits for wildlife as well as generate income for conservation delivery.

This new role will head up the operational running of Arcadian Ecology & Consulting, taking a particular lead on the development of our newly created Nature-Based Solutions programme. The aim is to position the Trust as a credible player in delivering nature-based solutions through planning and development and with a variety of other business clients, including biodiversity net gain, Building with Nature green infrastructure accreditation, carbon sequestration, nitrates mitigation, and natural flood management, through habitat creation and rewilding. These solutions will not only provide the Trust with direct opportunities to deliver a net positive impact – part of our pledge to become a climate “positive” organisation and to put nature into recovery – but also lead to the provision of NBS services for paying clients looking to address their climate and environmental impact. Together we see NBS as helping to unlock new sources of finance for conservation delivery as well making a major contribution to our strategic goals of 30% of land and sea in recovery for nature and climate.

This role demands confident leadership and astute business skills, a collaborative ‘can-do’ approach and attention to quality of output.

How rewilding helps us...



Cleans air and water



Reconnects us with nature



Prevents us from flooding



Revitalises wildlife



Locks away carbon



Restores our soil



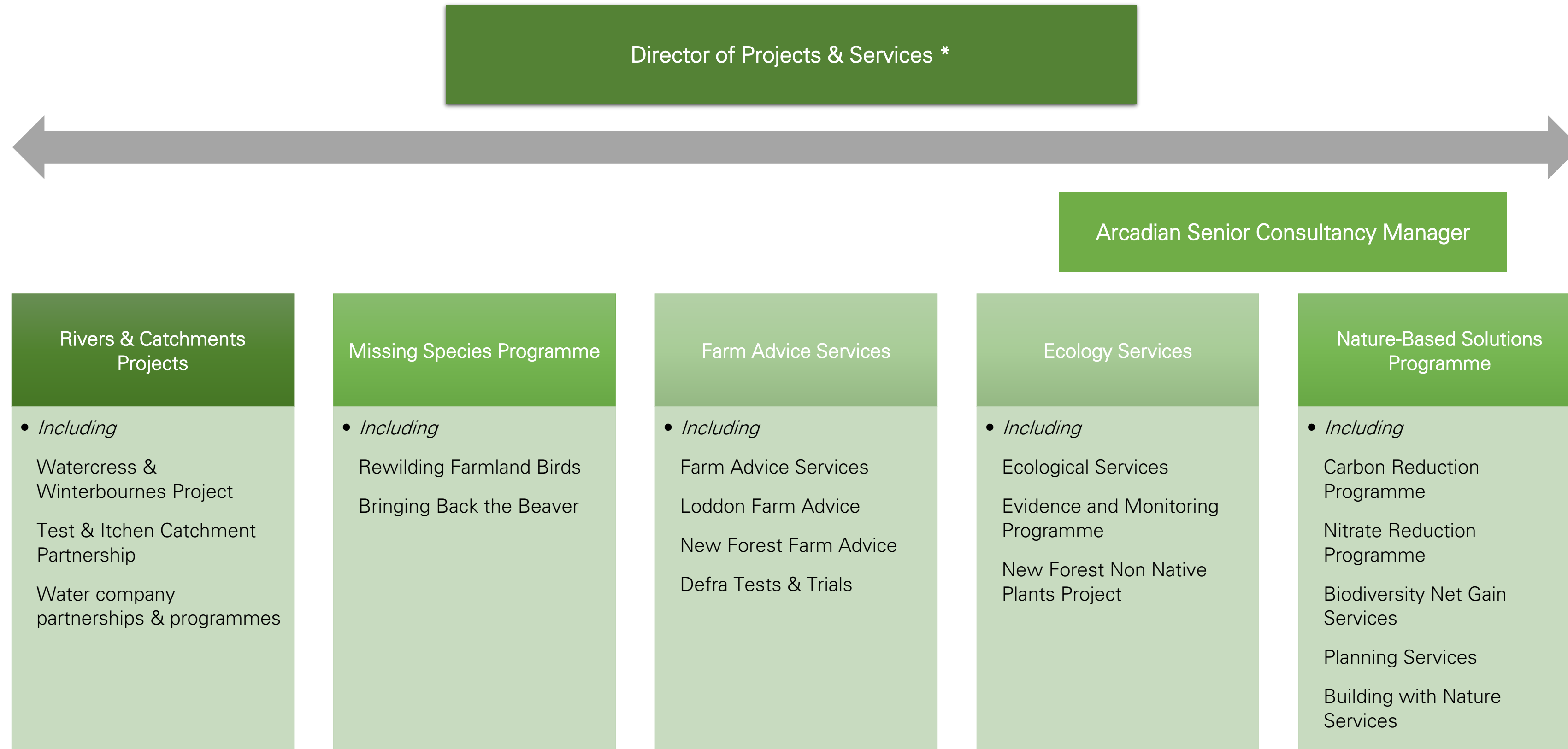
Supports new economic opportunities

Job Outline

- We are looking for a dynamic, experienced and capable Senior Team Manager to take on the operational running of Arcadian Ecology & Consulting and drive forward our Nature-Based Solutions Programme, an important part of our Wilder 2030 Strategy.
- You'll show leadership and confidence in identifying new business and developing new client relationships, in line with the strategic and commercial direction of the programmes you oversee.
- You will develop and deliver business plans for Arcadian Ecology & Consulting, aiming to build a strong and resilient business, meet profit targets and deliver a healthy return to the Trust as parent charity.
- You'll need a solid understanding of the role of nature-based solutions in tackling the nature and climate crisis, and the opportunities to stack them to achieve multiple benefits, such as wildlife recovery, biodiversity net gain, natural flood management, carbon sequestration, and nitrates mitigation.
- You'll need both the technical skills and the confidence to develop the Trust's role as a credible deliverer of NBS and the provider of solutions to paying clients looking to reduce their environmental impact.
- You'll need to be comfortable working in a fast-paced environment that can be unpredictable, be an excellent communicator, inspiring and accomplished relationship builder, with the right mix of creativity and attention to detail.
- Your focus will be on developing opportunities to deliver nature-based solutions, leading to projects that deliver benefits for wildlife and climate for the Trust as well as paying clients, partners and communities.
- You'll be part of the Projects & Services Directorate, a growing and dynamic multi-disciplinary department, including Arcadian Ecology & Consulting, increasingly focused on the role of nature-based solutions in achieving our overall Wilder2030 goals.



Programme Overview



* The department includes Arcadian Ecology & Consulting, the Trust's Consultancy business, alongside other projects delivered through the Trust. The Director of Projects & Services is the Department Head for the Trust and also acts in the role of Managing Director for the Consultancy, working closely with the new role of Arcadian Senior Consultancy Manager to report to the company's Board of Non-Executive Directors which includes the CEO of the Trust and some of the Trustees.

Key responsibilities

- Lead the development of the Trust's Nature-Based Solutions work, bringing together opportunities to deliver biodiversity net gain, carbon sequestration, nitrates mitigation and other opportunities to help tackle the climate and nature emergency, working with paying clients and partner organisations.
- As part of this, refresh and relaunch Arcadian as the Trust's key platform for the development of nature-based solutions expertise – including updating the website platform, brand visibility and other marketing materials as needed.
- Develop and deliver business plans for Arcadian Ecology & Consulting, aiming to build a strong and resilient business, meet profit targets and deliver a healthy return to the Trust as parent charity.
- Maximise commercial potential for the Trust, overseeing operational management of Arcadian and offering services to paying clients. Meet income targets and grow the consultancy/team and provision of services in line with organisation growth strategy.
- Coordinate the rollout of our innovative nitrate reduction programme, liaising with local authorities and developers to secure appropriate mitigation to offset and reduce any pollution impacts from developments.
- Develop wider nature-based solutions products and services, including carbon reduction (including blue carbon) for planning authorities, developers, local businesses and other organisations.
- Oversee the rollout of our Building with Nature offer to ensure developments provide high quality green infrastructure, achieve biodiversity net gain, and contribute to the nature recovery network.
- Work with senior planners / developers to identify forthcoming development needs and therefore the opportunities for nature-based solutions to create new wildlife habitats and add to the nature recovery network.
- Communicate, promote and position the Trust as a key player in the climate positive space and as a provider of nature-based solutions and associated expertise and services.
- Line manage the Ecology Manager, Building with Nature Technical Specialist & Senior Carbon Reduction Specialist.
- Support the Director of Projects & Services with the growth of services and departmental, strategic business plan development & reporting

Scope of role

Management responsibility

- Provide leadership and management for the team and subject area, together with effective line management and support of direct reports.
- Ensure annual performance and development reviews are carried out, together with regular supervisory meetings, setting and monitoring targets and reporting on achievements.
- Develop and implement succession planning for the team as required.
- Support the Director of Projects & Services in promoting and positioning the Trust's expertise, nature-based solutions, products and services to clients and project manage service provision delivery accordingly.

Delegated authority

- Set and monitor team budget in line with agreed organisational targets.
- Make operational changes to expenditure and income within agreed budget limits.
- Set and monitor overall priorities for the team and function in line with the current business plan and the strategic plan.
- Oversee and develop communication materials in line with agreed organisational priorities.
- Sign off expenditure up to Senior Manager Level in line with scheme of delegation, and prepare proposals for approval from Director of Projects & Services as required.

Level of contacts and liaison

- High level of engagement, awareness raising and liaison with a range of key external stakeholders including local planning authorities, developers, businesses, private individuals, partner organisation and paying clients.

External relations/public speaking or media

- Act as a key spokesperson for the Trust on nature based solutions, biodiversity net gain, sustainable planning, and natural climate solutions – and the role these all play in nature's recovery and tackling the climate and nature emergency.

- Effectively and proactively engage with partners and the wider public through a variety of opportunities, including all media types.
- Ensure the Trust is well-networked and able to influence the right people at the right level and at the right time.
- Participate fully in regional and national working groups and other initiatives with other Wildlife Trusts as appropriate.

Internal relations/reporting

- Working closely with the carbon reduction specialist, develop and establish reporting metrics for carbon footprint and carbon reduction measurements, and report regularly to Executive Team on progress towards net zero.
- Develop and establish other metrics for nature-based solutions and reporting mechanisms.
- Provide financial information and report on overall team performance and compliance with any relevant regulations to the Director of Projects & Services.
- Participate fully in team, department and staff meetings, maintain excellent communication with other staff across the Trust and embody a positive culture of sharing and learning.
- Champion a spirit of inter and intra-team working and wider cooperation.

Need for travel/out of hours

- Some evening and weekend work will be required and there will be a periodic need to be on-call.

General

- Promote the Trust wherever possible, in particular recruiting new members and acting as an ambassador for our vision, values and aims.
- Abide by all Trust procedures, policies and legal obligations.
- Undertake additional duties commensurate with the post as may reasonably be requested from time to time.

Person specification

EXPERIENCE

- Team leader / Manager level experience in an environmental organisation.
- Working in or in close liaison with the commercial sector
- Innovation in delivering solutions and generating income
- Comprehensive working in one of the NBS programme fields
- Developing new projects, products or services.
- Writing strategies and action plans.
- Coordinating action across different teams.
- Championing and motivating achievements.
- Reporting and communication.
- Working within the nature conservation sector.

KNOWLEDGE

- Nature conservation and environmental policy and legislation, in particular around nature-based solutions, climate action and nature's recovery.
- Sound understanding of biodiversity net gain & the Defra Metric model.
- Knowledge of planning policy and legislation.
- Understanding of other NBS and how to achieve delivery.
- Knowledge of green infrastructure, planning, design & implementation (desirable)
- Knowledge of green and blue carbon NBS (desirable).
- Knowledge of the environmental sector, its structure and key players.

SKILLS

- People management.
- Product & business development.
- Writing contracts & successful tenders.
- Excellent communication skills both written and verbal.
- Client relationship management
- Tactical planning and execution – ability to turn plans into reality.
- Attention to detail and track record of high quality delivery.
- Effective negotiator and problem solver.
- Team worker and collaborator.
- Relationship builder.
- Computer literate and effective IT user.
- Report writing and review (including GIS map production)
- Membership of CIEEM or similar

PERSONAL QUALITIES

- Dynamic with energy and drive.
- High level of personal and professional integrity and ethics.
- Resourceful and flexible.
- Motivated by achieving ambitious targets and outcomes.
- Ability to work under pressure and juggle a complex and busy workload.
- Politically aware and able to deal with sensitive issues constructively.
- A champion of cross-organisational working.
- Personable and approachable.
- Mature and professional outlook.
- Genuine interest in nature conservation and environmental issues.

What we offer

Pay

Whether you are Reserves Officer shaping habitats for wildlife or a Finance Officer crunching the numbers, you are vital to the achievement of our vision for a wilder future. We want to make sure that you stay with us and feel valued, recognised and rewarded. So we benchmark our salaries against similar organisations to make sure we offer a competitive salary for all. We are also a living wage employer.

Pension

Securing your future is as important to us as securing the future for wildlife. All our employees are auto-enrolled into our pension scheme. Those on permanent contracts, or fixed term contracts for over 2 years, receive 6% contribution from the Trust with an employee contribution of 2%. Those on temporary or shorter termed contracts are auto-enrolled onto our NEST pension scheme, receiving a 3% contribution from the Trust and paying 5% themselves.

Holidays

Whether you want to hibernate or travel south for the winter, you will receive a generous 25 days holiday plus 8 bank holidays each year (pro-rated for part time staff). Your holiday entitlement will increase with your length of service to a maximum of 30 days per year.

Flexible Working

As we work to tip the balance in favour of nature, we are keen to ensure that our employees have a healthy work life balance too. We are always ready to talk to staff about ways we may be able to support this. We have a number of staff who work part time, from home or with flexible working patterns.

Health and Wellbeing

Like nature, should you need support to recover, we offer enhanced sick pay above your statutory entitlement. We also fund counselling sessions for employees who would like help with their mental health and wellbeing as part of our Employee Assistance Programme.

Learning and development

We ensure that wildlife has a habitat to thrive in and we do the same for our staff. We commit to ensuring that our employees have the skills, knowledge and experience they need in order to excel at their role. We recognise talent and actively support professional training and career development.

Team building and social activities

Although we like to work hard, we also like to have fun. We encourage and organise a range of activities to give staff plenty of opportunities to build good relationships across and within teams. Through regular staff meetings and get-togethers, fundraising events, quizzes, social nights and trips out to see wildlife on our reserves, it's important to love where you work and so we encourage everyone to take part and feel part of the amazing family that is the Trust!



Equality, diversity and inclusion

Our vision

The Wildlife Trusts believe that everyone should have the opportunity to experience the joy of wildlife in their daily lives, and we are committed to putting equality, diversity and inclusion at the heart of our organisation and our growing movement for nature.

Our vision of a wilder future for all goes hand in hand with the creation of a diverse organisation that reflects the communities that we serve. The differences of thought, skills, ideas and experience brought by a diverse team of staff and volunteers will be invaluable in tackling the future challenges faced by nature and wildlife.

However, we recognise that our workforce needs to better reflect the communities in which we live and work, and we are currently not doing as well as we would like to attract diversity within our workforce. Nature conservation is currently one of the least diverse professions in the UK and we must do far better to encourage and inspire people of all backgrounds to join our team.

Where we are now

Today our gender and age diversity is good within the Trust. Women are well represented and we have a good spread of different ages within the staff. Based on our gender pay gap calculations, on average (median) men and women are paid equally at the Trust and our mean calculations report that on average women get paid slightly more than men.

We do, however, recognise that there is much work to be done on improving representation in other areas, particularly with regards to ethnic and racial diversity across our volunteer base, staff body and board of trustees. We are not as diverse as we want to be, or that nature needs us to be.

We have successfully delivered paid traineeships and apprenticeships over a number of years, as a means to access employment in the sector. We are now working on a equality, diversity and inclusion strategy to take a more proactive approach to the issue.

Our commitments


We are committed to ensuring we reflect and represent all parts of society by improving access to jobs and training opportunities for groups currently under represented in our sector.

We are committed to ensuring a working environment in which all individuals are free from discrimination and in which opportunities are equal to all.

We encourage applications from all sections of the community, particularly those underrepresented within our sector, including people from black, Asian, minority Ethnic backgrounds and people with disabilities.

We are committed to creating a movement that recognises and truly values individual differences and identities.

How to apply



Please fully complete both Part A and Part B of our application form.


In section 8 you'll need to demonstrate, with detailed examples, how you meet the job requirements.



We shortlist candidates against the job requirements and person specification.

Only those successfully shortlisted for interview will be contacted.

If you don't hear from us then assume you have not been shortlisted.



Our interview process normally consists of formal questions, a presentation or task, and a chance for an informal chat.

We sometimes invite people back for second interviews.

Charity Information

Structure

Hampshire and Isle of Wight Wildlife Trust is a registered charity (No. 201081) and a company limited by guarantee in England and Wales (No. 676313). VAT registration number 238466579.

The charity was founded and incorporated as a company limited by guarantee on 28 November 1960, as Hampshire and Isle of Wight Naturalists' Trust Limited. On 4 June 1991 the charity changed its name to Hampshire and Isle of Wight Wildlife Trust Limited, later simplifying it to Hampshire and Isle of Wight Wildlife Trust on 19 December 2006.

The charity has two subsidiary trading companies. Their work is overseen by a board of Directors which is accountable to Council. Day-to-day management of the Trust's two subsidiary companies is delegated to the Chief Executive.

- Arcadian Ecology and Consulting Limited Established in 2016; Company No. 10033962. The consultancy delivers a range of chargeable services including ecological surveys and the provision of land management advice. As a subsidiary of the Trust, Arcadian abides by the Trust's policies and procedures and staff are subject to the same terms and conditions of employment.
- HIWWT Trading Limited Established in 2013; Company No. 08478757. Currently dormant, the company provides the Trust with a vehicle for the potential development of trading activities in the future, such as retail sales.

Hampshire and Isle of Wight Wildlife Trust is a member of the Royal Society of Wildlife Trusts (registered charity number 207238) along with 45 other Wildlife Trust members throughout the UK which are collectively known as The Wildlife Trusts.

Charitable Purposes

Hampshire and Isle of Wight Wildlife Trust has two main charitable purposes in accordance with the Charities Act 2011 and as set out in our Articles of Association:

1. For the benefit of the public, to advance, promote and further the conservation, maintenance and protection of the environment.
2. To advance the education of the public in the principles and practice of sustainable development and biodiversity conservation.

In support of these purposes, the Trust promotes research in all branches of nature study and the publishing of the useful results thereof.

Public Benefit

Section 17 of the Charities Act 2011 sets out the requirement for all charities to deliver public benefit. The Trust's public benefit is enshrined in its charitable objectives and activities, providing multiple benefits for the public which are wide-ranging and long-lasting.

Our nature reserves are used extensively by the public for quiet recreation; many have access on clearly marked paths along with information and interpretation for visitors. The land we manage provides a range of other public benefits such as flood risk management, carbon storage, pollination, pollution control and aesthetic beauty. Government and businesses are now recognising the essential role that nature plays in supporting the economy, not least through the provision of these public goods and services.

Through providing advice and assistance to farmers and landowners, the Trust helps to support the rural economy and wider landscapes valued by the public. We deliver an extensive education and engagement programme, inspiring thousands of people of all ages. From schools, colleges, adult groups and the wider public, to enjoy contact with the natural world and benefit from its positive effect on health and wellbeing.

Evidence and advice provided by the Trust to local government, private companies, landowners and communities helps to ensure that decisions on policies relating to land management, development, and public health take full account of the public benefit of wildlife and a healthy environment.

**Hampshire &
Isle of Wight**
Wildlife Trust



CREATING A

WILDER

HAMPSHIRE AND ISLE OF WIGHT