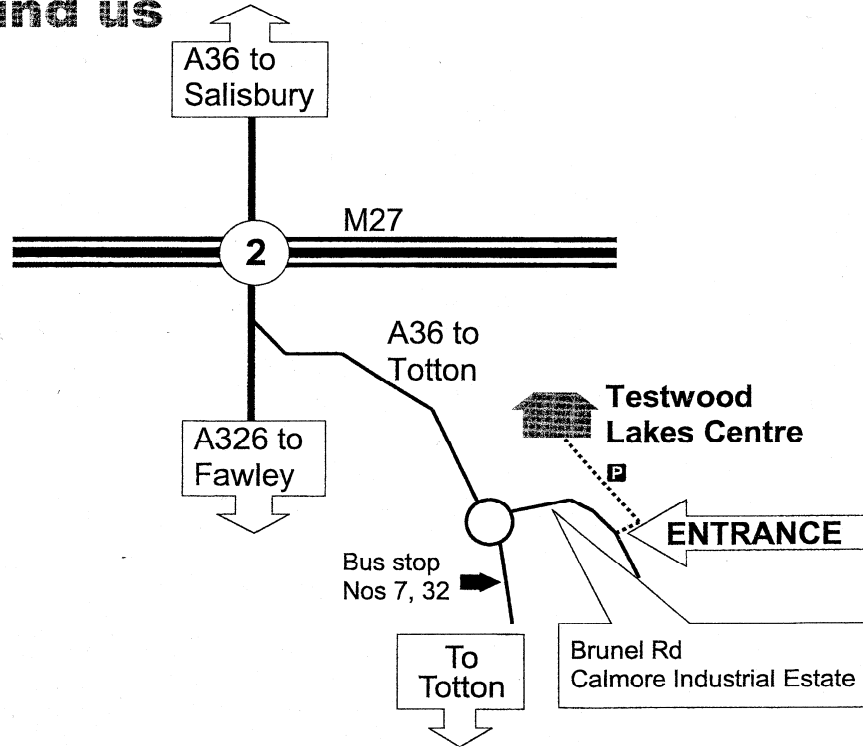
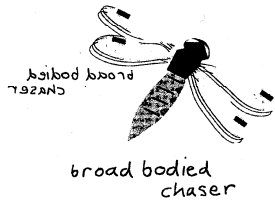


How to find us



DIRECTIONS TO TESTWOOD LAKES CENTRE

From the M27:

- ❑ Leave at Junction 2 (signed **A36 Totton, Salisbury**).
- ❑ Head for Totton, taking the first slip road off the A326 (signed "**Totton & Calmore Industrial Estate**").
- ❑ Turn **left at the T-junction** at the top of this slip road and head towards Totton.
- ❑ Turn **left** into **Brunel Road** at the **first Roundabout** (approx. 1 mile).
- ❑ After 200 yards along Brunel Road and past an electricity pylon, turn left through large gates and follow the track for about 800yards to the Centre building.

By Bus: Bluestar No 12 runs from Totton station at 8.50, 9.20 and every 30mins. Go as far as the Testwood Pub then walk from there. Cost is something between £1 and £2. <http://www.bluestarbus.co.uk/pdfs/bs12.pdf>