

Hampshire &  
Isle of Wight  
Wildlife Trust



# Wildlife Watch

During these confined times we wanted to share with you some ideas of activities and games to keep connected with nature.



Join us: [hiwwt.org.uk/join-to-day](http://hiwwt.org.uk/join-to-day)

BE PART OF A  
**WILDER**

Hampshire & Isle of Wight





© Adam Jones

Front cover image © Tom Marshall  
Registered Charity No. 201081

# Wild about nature!

Here at Hampshire & Isle of Wight Wildlife Trust we know that many of you are wild about nature! So, we thought we would put together a booklet, packed with ideas and activities to help you keep occupied over the coming months. We hope you enjoy!

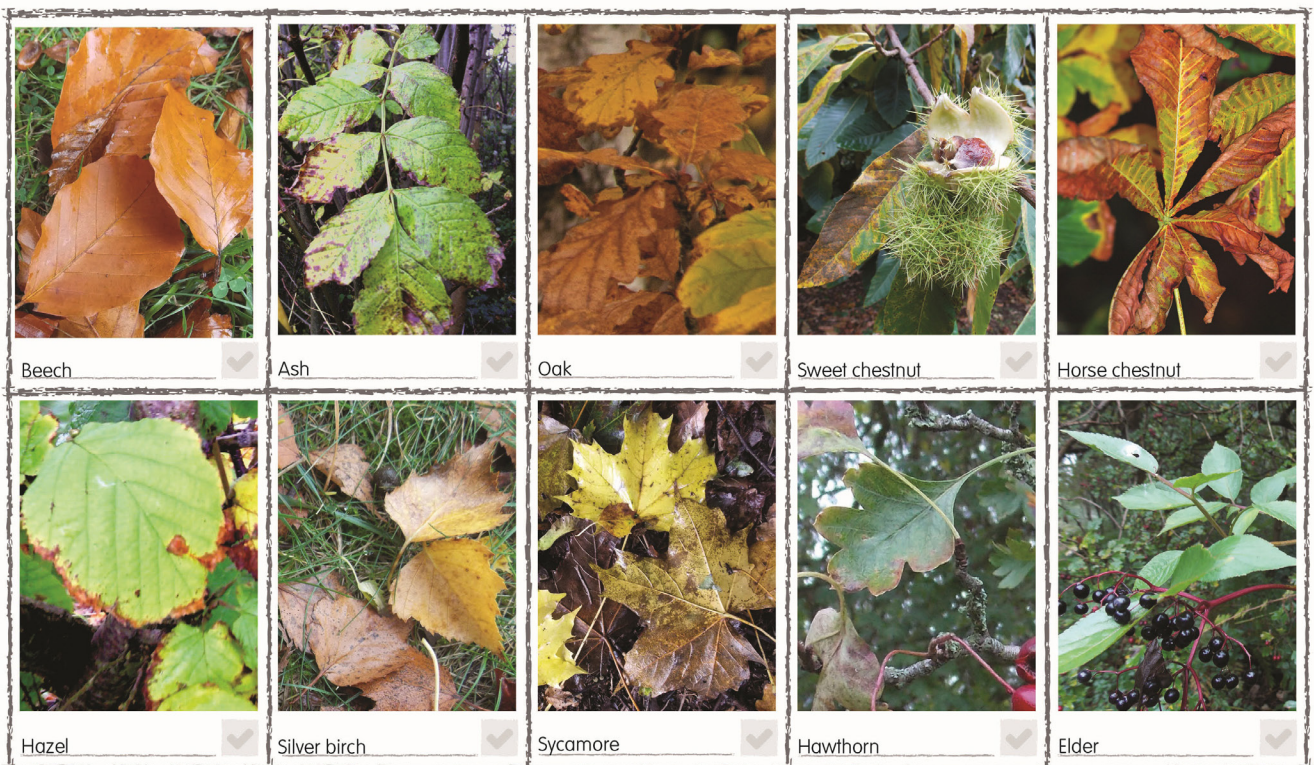
<b>Incredible sights and ways to help</b>	3-10
Spotter sheets	3-4
Bird detectives	5-6
Poster	7-8
Ways to help wildlife during autumn and winter	9-10
<b>Creative activities for children</b>	11-17
Wordsearch	11-12
Crafts	13-14
Colouring in	15
Wild recipes	16
Weird and wonderful wildlife	17

# Woodland wildlife



[www.wildlifewatch.org.uk](http://www.wildlifewatch.org.uk) Credits: Brambling and Siskin (c) Harry Hogg / Robin (c) Amy Lewis / Coal tit (c) Scott Petrek / Holly (c) Philip Precey / Wren and Woodcock (c) Margaret Holland / Jelly ear fungi (c) Les Binns / Fox (c) Jon Hawkins / Goldcrest (c) David Longshaw

# Trees and leaves



[www.wildlifewatch.org.uk](http://www.wildlifewatch.org.uk) Credits: Horse Chestnut (c) Gillian Day / Oak (c) Paul Hobson / Beech, Ash, Sweet Chestnut, Silver Birch, Sycamore, Hawthorn, Elder, Hazel (c) Sadie McGlone

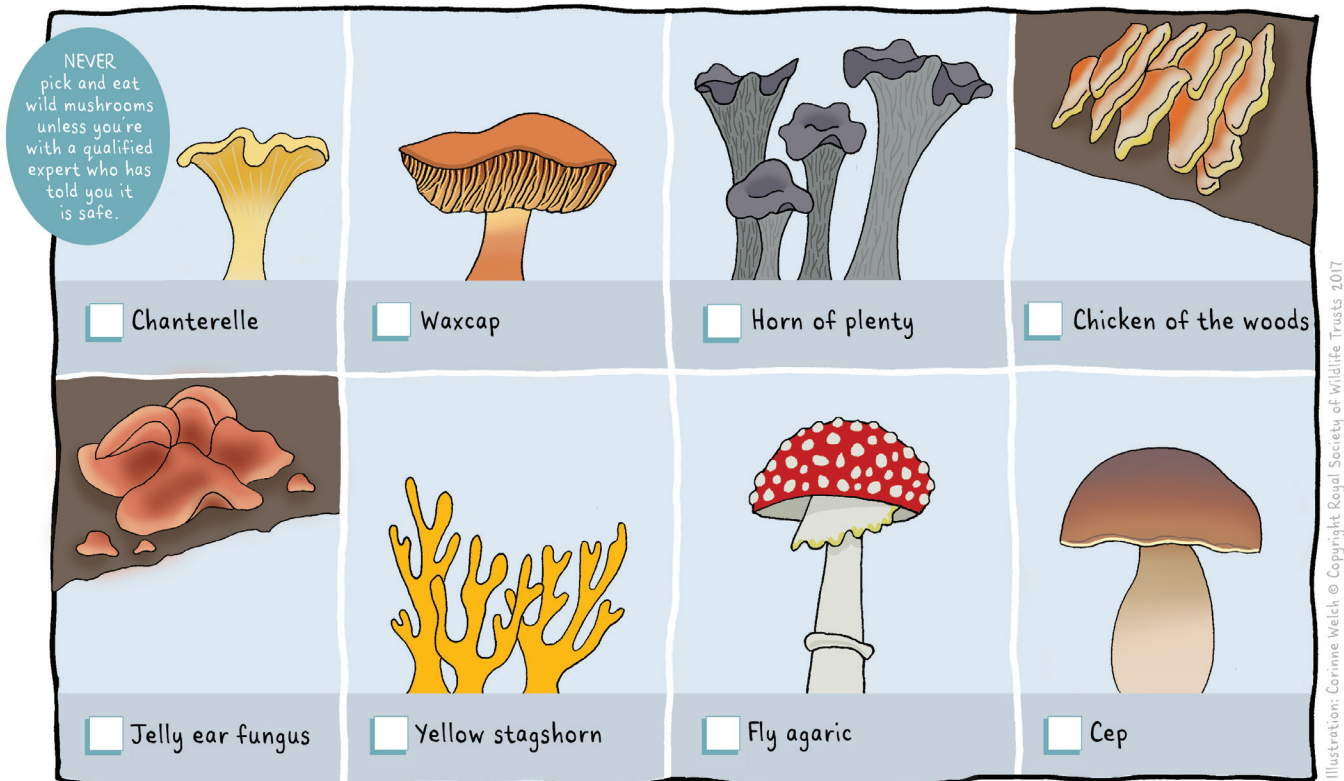
# Nuts and berries



[www.wildlifewatch.org.uk](http://www.wildlifewatch.org.uk)

Yew (c) Les Binns / Acorn, Ivy, Horse chestnut, Beech nuts and Rowan (c) northeastwildlife.co.uk / Holly, Rose hips, Crab apples and Hawthorn (c) Philip Precey

# Fungi



[www.wildlifewatch.org.uk](http://www.wildlifewatch.org.uk)

# Garden birds



[www.wildlifewatch.org.uk](http://www.wildlifewatch.org.uk)

Pictures: Chaffinch, Blue tit, Goldfinch and Great tit (c) Amy Lewis / Greenfinch (c) Gillian Day / House sparrow (c) Stewart McDonald / Blackbird (c) Neil Aldridge / Collared dove (c) Ian Rose / Starling (c) Margaret Holland / Wood pigeon (c) Steve Waterhouse

# Crows and other black birds



[www.wildlifewatch.org.uk](http://www.wildlifewatch.org.uk)

Credits: Carrion crow (c) Amy Lewis / Hooded crow, jay, raven, rook and starling (c) Margaret Holland / Jackdaw (c) Neil Aldridge / Magpie (c) Steve Waterhouse / Chough (c) Damian Waters - drumimages.co.uk / Blackbird (c) Zsuzsanna Bird

# Bird recording sheet

Find the bird, record where you found it.

<b>Chaffinch</b>	
<b>Greenfinch</b>	
<b>House sparrow</b>	
<b>Blackbird</b>	
<b>Blue tit</b>	
<b>Goldfinch</b>	
<b>Great tit</b>	
<b>Collared dove</b>	
<b>Starling</b>	
<b>Wood pigeon</b>	
<b>Carrion crow</b>	
<b>Hooded crow</b>	
<b>Jackdaw</b>	
<b>Magpie</b>	
<b>Jay</b>	
<b>Raven</b>	
<b>Chough</b>	
<b>Rook</b>	
<b>Starling</b>	







For a wilder Hampshire & Isle of Wight

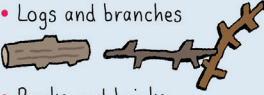
# Build a hibernaculum

## You will need:

- Spade



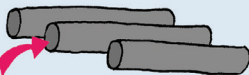
- Logs and branches



- Rocks and bricks

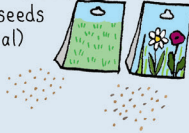


- 2-3 drainpipe off-cuts or cement pipes

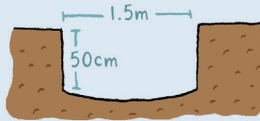


If using plastic drainpipes, roughen the insides with sandpaper so that they are not too slippery for animals to climb

- Turf or meadow flower seeds (optional)



- 1 In a sunny spot, dig a hole about 50cm deep and 1.5 metres across.



- 2 Fill with logs, branches, bricks and rocks, leaving plenty of gaps in between.



- 3 Insert entrance tubes (drainpipes) at ground level into the pile.



- 4 Cover the pile with soil (to about 50cm high).



- 5 You can plant meadow seeds or turf over the mound.



[www.wildlifewatch.org.uk](http://www.wildlifewatch.org.uk)

Illustration: Corinne Welch © Copyright Royal Society of Wildlife Trusts 2015

# Make your own bird feeder

## What you need:

- dry ingredients

- bird seed
- dried fruit
- cooked rice
- breadcrumbs
- grated cheese
- chopped nuts

- hard cooking fat (lard or dripping)

- a fir cone, coconut shell or yoghurt pot



- string



- 1 Mix all the dry ingredients together in a bowl



- 2 Add the fat and give it a good mix around

- 3 Choose your feeder



plaster all over a fir cone



put it round the inside of a coconut shell



press into a yoghurt pot

You can hang this upside down like a bell or turn it out like a cake

- 4 Hang your feeders with string (you may need to make holes and tie the string in before adding the mix)



Hang your feeder where you can watch birds without disturbing them

If you need to melt the fat, ask an adult to help



[www.wildlifewatch.org.uk](http://www.wildlifewatch.org.uk)

© Corinne Welch 09

# Make a hedgehog house

**You will need**

- 20mm FSC plywood boards cut to the sizes shown
- Hammer and nails
- 2 metal hinges
- Soil
- Dry leaves
- Straw or dry grass
- Newspapers
- Polythene sheeting

*Birch is ideal*

**1** Construct the hedgehog house from the following diagram and dimensions.

**2** Put the newspaper and straw or dry grass inside, cover the house with polythene sheeting, then pack soil and dead leaves around the outside.

Do not creosote or treat the wood

Make sure the entrance tunnel faces south, and is kept clear at all times

The roof is hinged so you can clean the box in future

raised up on feet

[www.wildlifewatch.org.uk](http://www.wildlifewatch.org.uk)

# Make a bat box

**What you need:**

- an adult to help you
- rough cut, untreated timber
- tape measure and pencil
- saw
- hammer and nails
- rubber flap
- odourless wood glue (optional)

140mm, 200mm, 90mm, 200mm, 150mm, 360mm

side, side, base, roof, front, back

angled edge cut at 22°

angled cut at 22°

roughen back plate with 1mm deep cuts every 10mm

22° cut

22° cut

rubber hinge flap

seal gaps at edges with wood glue

10mm wide entrance slit between base and back plate

80mm

5 metres

**IMPORTANT**  
Do not use wood stain or preservative anywhere on box

IT IS ILLEGAL TO DISTURB BATS WITHOUT A LICENSE - DO NOT INSPECT BOXES IF YOU THINK BATS ARE USING THEM

Look for droppings below to check for occupancy

[www.wildlifewatch.org.uk](http://www.wildlifewatch.org.uk)

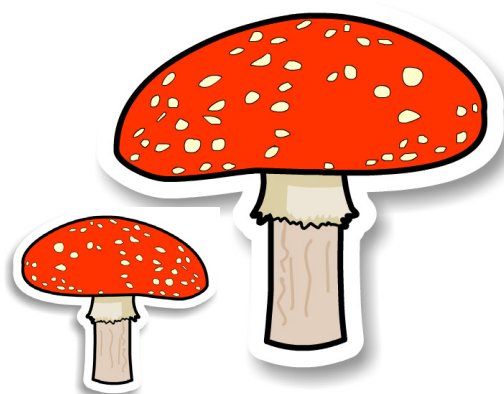
# Wordsearch

## Woodland wildlife

R	I	A	A	M	C	O	N	K	E	R	C	R	N
I	C	G	P	U	F	F	B	A	L	L	S	N	L
U	R	R	O	N	F	L	Y	A	G	A	R	I	C
O	L	E	B	G	S	S	U	H	C	A	O	O	Y
W	M	Y	E	E	H	N	L	U	M	C	N	M	Y
O	B	S	E	S	K	C	P	T	N	O	C	R	F
O	Q	Q	C	C	Y	L	T	H	N	R	O	E	M
D	P	U	H	R	I	A	E	A	L	N	L	G	M
M	K	I	M	A	A	E	J	K	H	E	A	R	D
O	L	R	A	N	N	E	B	U	D	T	L	H	H
U	O	R	O	E	O	A	T	A	P	T	U	O	L
S	E	E	T	F	T	B	G	K	S	A	R	N	B
E	E	L	L	L	S	U	E	F	L	E	L	L	L
H	I	L	R	Y	O	C	S	M	E	Y	Y	R	E

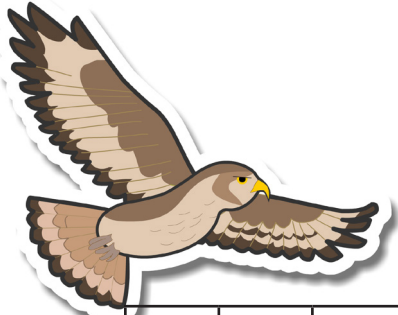
Acorn  
Beech  
Conker  
Cranefly  
Fly agaric  
Grey squirrel  
Jay

Nuthatch  
Puffballs  
Wood mouse



# Wordsearch

## Birds of prey



E	L	G	A	E	N	E	D	L	O	G	Y	R	S
I	S	A	B	E	T	I	S	E	E	Y	R	M	H
M	L	R	D	R	A	Z	Z	U	B	W	G	E	R
A	R	E	U	E	Y	E	L	S	G	K	D	R	G
R	A	O	H	O	B	O	W	E	I	S	R	L	B
S	O	G	W	M	B	S	R	K	R	D	N	I	R
H	R	O	S	A	O	P	N	P	E	T	R	N	O
H	E	S	P	R	H	R	Y	E	D	R	S	G	S
A	D	H	A	A	E	E	A	O	R	R	R	E	M
R	K	A	R	S	R	Y	E	E	R	I	D	W	K
R	I	W	S	P	A	R	R	O	W	H	A	W	K
I	T	K	R	K	L	U	E	E	B	E	A	I	A
E	E	H	R	A	S	G	E	R	E	S	E	R	R
R	K	R	E	I	R	R	A	H	N	E	H	O	M

Buzzard  
Golden eagle  
Goshawk  
Hen harrier  
Hobby  
Kestrel  
Marsh harrier

Merlin  
Osprey  
Red kite  
Sparrowhawk



# Pine cone creatures

## You will need

- Pinecones
- Craft foam, felt or card
- Scissors
- PVA glue and double-sided sticky tape

• Various things (as many natural as possible) to make your animal, such as:

- Leaves
- Acorn cups
- Berries or googly eyes

Always check what berries are before you pick them because some can be harmful to people!

1 Decide what animal you want to make. If you want it to stand, pick a pine cone that will stay upright and make and glue on the feet first.



2 Add legs or wings and eyes and ears using the materials you've collected.



PVA should stick most things, but ask an adult to help if you need to use a hot glue gun.

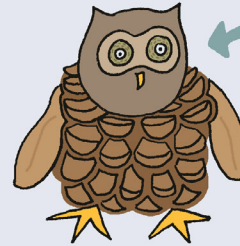
Here are a few examples to get you inspired...



mouse



fox



owl

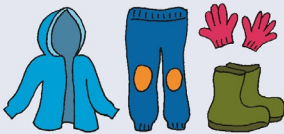
Acorn cups with berries or googly eyes in the centre make great eyes!

[www.wildlifewatch.org.uk](http://www.wildlifewatch.org.uk)

# Puddle jumping

## You will need

- Waterproof jacket with a hood, gloves if cold, waterproof trousers and wellies.



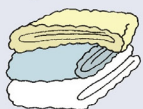
- Puddles – if they are muddy puddles, all the better!



- Hot drinks



- Towels and a warm dry area to go to afterwards.



Bring a change of clothes just in case!

## We all like jumping in puddles!

There is no need to stay inside during or after rain. Playing in puddles can introduce all sorts of concepts, from depth and width, floating and sinking, to what it feels like to be muddy or stuck in mud. You can make squelchy and splashing noises, and jumping is great exercise and helps promote balance.

### Try and find a range of puddles

(but don't play near a road, no matter how good the puddle looks).

Ask an adult to check the puddles out first to make sure that they are safe to jump across or into.

Who can make the biggest splash? Try two people jumping in at the same time.

Can you float a leaf or a stone?

Can you creep across quietly with no splashing? Who leaves the smallest ripples?

Who can cross the puddle like a frog?



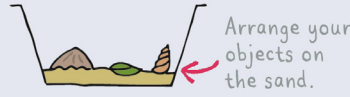
[www.wildlifewatch.org.uk](http://www.wildlifewatch.org.uk)

# Make fake fossils

## You will need

- margarine tubs 
- plaster of paris 
- sand 
- natural found objects (leaves, sticks, shells) 
- cooking oil 
- kitchen roll 
- paint (tester pots are good) 
- paintbrushes 

1 Put a 1cm layer of sand at the bottom of your tub. Using the kitchen roll, rub your natural found objects with oil (this makes them easier to remove later).



2 Sprinkle a 50/50 mixture of sand and plaster of paris over the fossils. Sprinkle water on the sand to make it damp.

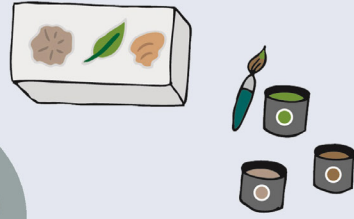


Make sure you follow the safety instructions on the plaster of paris packet.

3 Wait until the plaster is set, and then gently break the 'rock' to find the 'fossils' inside.



4 The fossil moulds then can be painted to make them more realistic.



[www.wildlifewatch.org.uk](http://www.wildlifewatch.org.uk)

Illustration: Corinne Welch © Copyright Royal Society of Wildlife Trusts 2015

# Make a pine snow globe

## You will need

- Couple of small pine branches 
- Plastic bottle (cleaned and label removed) 
- Water 
- Eco-glitter\* 
- Strong glue 

\*Glitter is a microplastic which is bad for the environment. Only use eco-glitter for this activity!

1 Collect your pine branches (these could be snipped from your Christmas tree or from a dropped branch on the ground).



2 Insert pine clippings into your bottle. You might want to add one branch, or lots of small ones.



3 Fill up your bottle with cold water (almost to the top).



4 Add your wintry decorations - a spoonful of eco-glitter and pine needles.



5 Apply strong glue to the inside of your lid. Screw your lid onto the top of your bottle.



6 Give your snow globe a shake. Ahhh.... pretty!



[www.wildlifewatch.org.uk](http://www.wildlifewatch.org.uk)

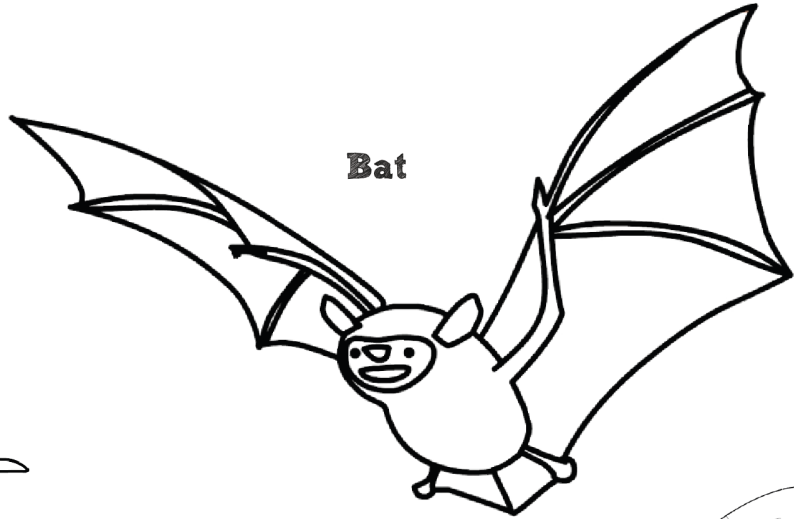
Illustration: Corinne Welch © Copyright Royal Society of Wildlife Trusts 2016

# Animal colouring

**Grass Snake**



**Bat**

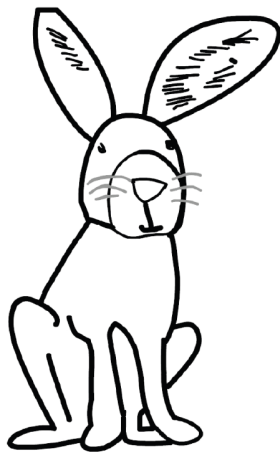


**Red Squirrel**

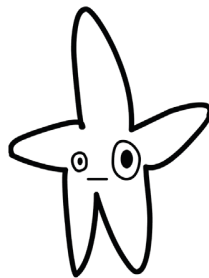
**Common Lizard**



**Jellyfish**



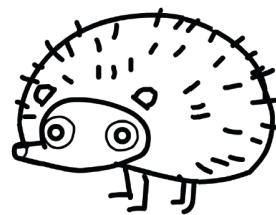
**Brown Hare**



**Starfish**



**Crab**



**Hedgehog**



**Seahorse**



**Frog**



**Water Vole**



# Wild Recipes

## Bredgehogs

### Hedgehog inspired bread rolls

Ingredients:

400g flour – ideally bread flour  
7g dried yeast  
7g salt  
300ml lukewarm water

Method:

- Add flour, yeast, and salt into a bowl.
- Slowly pour the lukewarm water and mix well. Your dough will be sticky and you can add more flour if needed. However, sticky doughs are better than dry ones.
- Lightly oil a surface and oil your hands. Knead for five-ten minutes then leave in a warm place to rise for 30 minutes. Repeat this two more times. Three times total.
- Separate dough into six pieces (or however many you want).

- Fold or roll your dough into a ball.
- Leave to rise for 30 minutes more.
- Turn your oven on to 200C.

To make your dough into hedgehogs:

- Pinch one side of the ball to make a snout.
- Use scissors to cut spikes into the dough.
- Poke holes for the eyes (raisins, chocolate chips, almonds can go into the spaces for eyes once they're done baking).
- Put rolls in the oven until golden brown. This will usually take 30 minutes depending on the size of the rolls.
- Leave to cool before eating. Warm bread is nice, but if you leave the bread to cool the bread will continue to bake out of the oven and you'll have a much nicer loaf because of it.

Recipe inspired by:  
BBC Good Food

## Pancake pals

### Wildlife inspired pancakes

Ingredients:

128g of self-raising flour  
1 egg  
236ml of milk  
2 table spoons of sugar

Method:

- Sift the flour into your bowl.
- Add the sugar.
- Make a well in the middle.
- Mix the milk and eggs together and add the mixture into the well you've made.
- Give it a good stir to get rid of any lumps.
- Bring a frying pan to medium heat with a little oil.

- To make the pancakes into wildlife shapes use a piping bag - this will give you better control. A thicker batter will also help.
- Add the batter to the piping bag and cut a corner off. Now you're ready to draw your wildlife shapes.
- Flip the wildlife pancake when quite a few bubbles have risen to the top. Serve when lightly browned on both sides.

Recipe inspired by:  
[mothernatured.com/fun-animal-food-ideas/wildlife-pikelets/](http://mothernatured.com/fun-animal-food-ideas/wildlife-pikelets/)



# Weird and wonderful wildlife

**From fluffy worms that live in the sea to giant fungi, the UK is home to some weird and wacky wonders.**

## Buff-tip moth

It is so easy to miss this clever little moth. The buff-tip moth is a master of disguise: with a pale head and brown-grey wings it looks just like a twig. This night-flying moth can be spotted from May to July in open woodland, scrub, hedgerows and gardens.



## Giant puffball

This typically spherical fungus could be confused with a football from a distance! The giant puffball is actually one of the world's largest fungi, typically reaching 10-80cm in diameter. Look for giant puffballs in grassland environments from summer to autumn, where they can often be found hidden next to nettles and scrub.



## Sea mouse

Despite its name this strange creature is actually a type of marine worm! Its body is covered in grey bristles with edges that glisten blue, green and gold, giving it a furry appearance. The sea mouse is around 7-15cm in length and an active predator, hunting small crabs and other worms that live on the seabed.



Hampshire &  
Isle of Wight  
Wildlife Trust



# Join today

If you're not a member please consider joining or recommend us to your family and friends. From just £4.50 a month you can enjoy a family membership, which includes a Wildlife Watch membership.

[hiwwt.org.uk/join-today](http://hiwwt.org.uk/join-today)



The  
Wildlife  
Watchers'  
Handbook



**Hampshire & Isle of Wight Wildlife Trust**  
**Beechcroft House, Vicarage Lane,**  
**Curdridge, Hampshire SO32 2DP**  
**Telephone - 01489 774400**  
**Email - [feedback@hiwwt.org.uk](mailto:feedback@hiwwt.org.uk)**  
**[hiwwt.org.uk](http://hiwwt.org.uk)**

© Mark Hamblin/2020VISION  
Registered Charity No. 201081